

HINTS AND TIPS

5MP wifi camera: Setup the camera wired to your router using iPhone

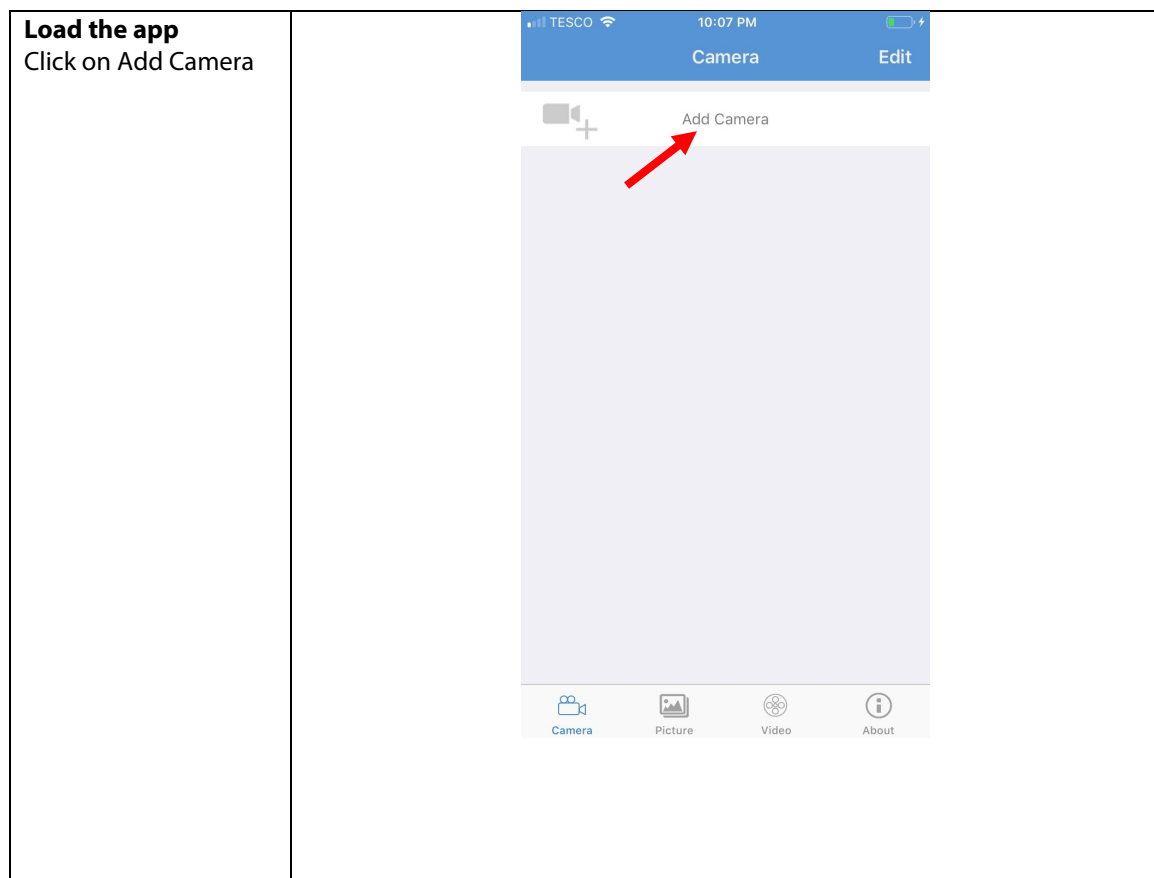
First connect the camera to your LAN cable. Connect the cable into the large connector and it should 'click' in. Ignore the small round power connector on the camera.

On the other end of the LAN cable, plug into the POE port of your POE power supply. This should be the port that says +P (This means it will send power down to your camera).

Connect the short lan cable to the other port on the POE. Make sure it 'clicks'. Connect the other end of this cable to your router and again, make sure it 'clicks' into position.

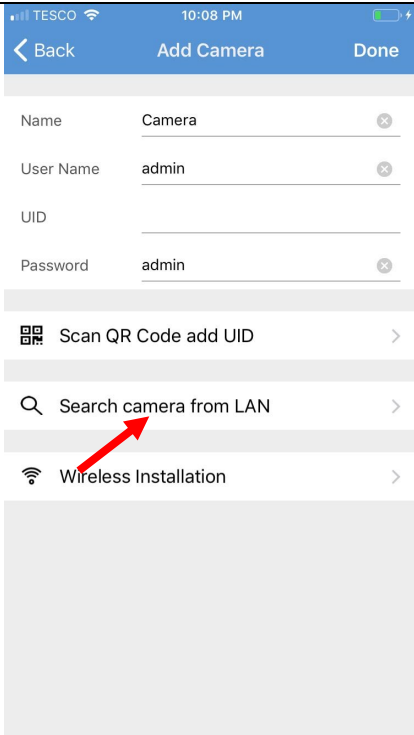
Plug in the POE supply to the mains. You should see lights flicker on the POE connector as well as on the camera's black connector. (Small amber and green lights in small holes on the connector). If you don't see any lights just check the connections again.

Download the CamHi app from the apple store onto your iphone. [Click here](#)

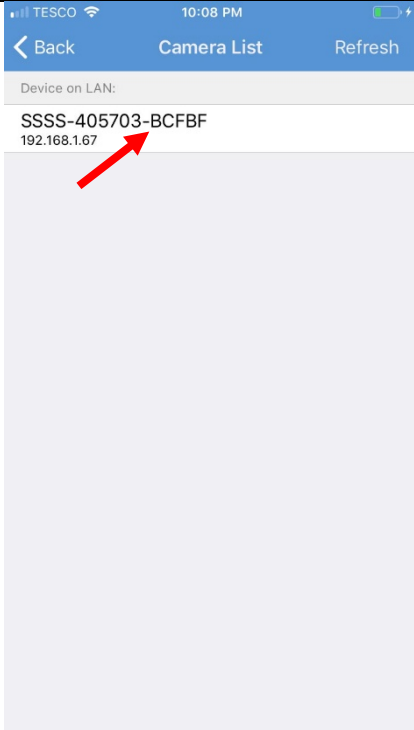


HANDYKAM.COM

Click Search camera from LAN

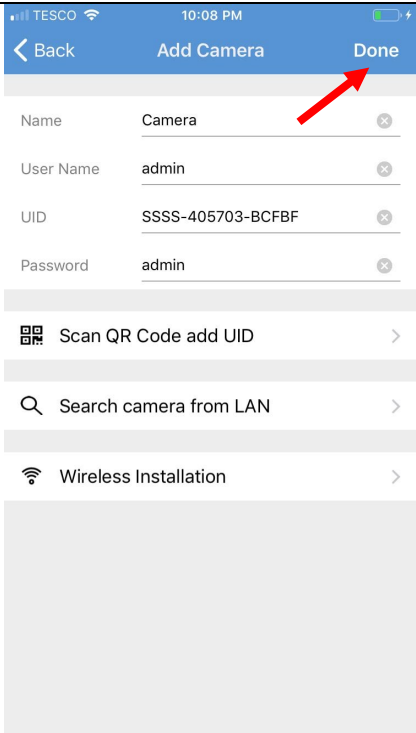


Tap camera ID

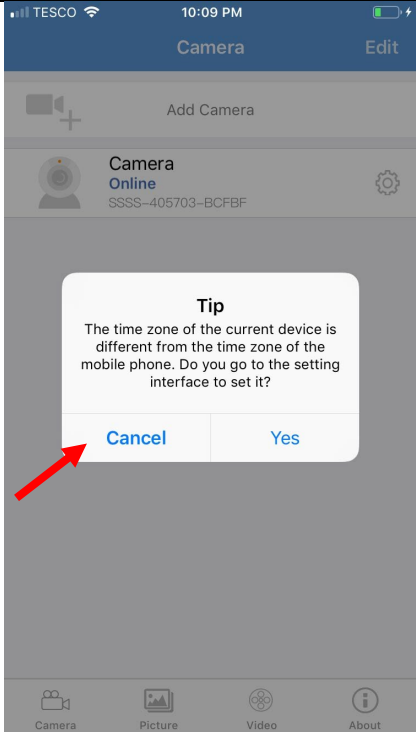


HANDYKAM.COM

Click on Done

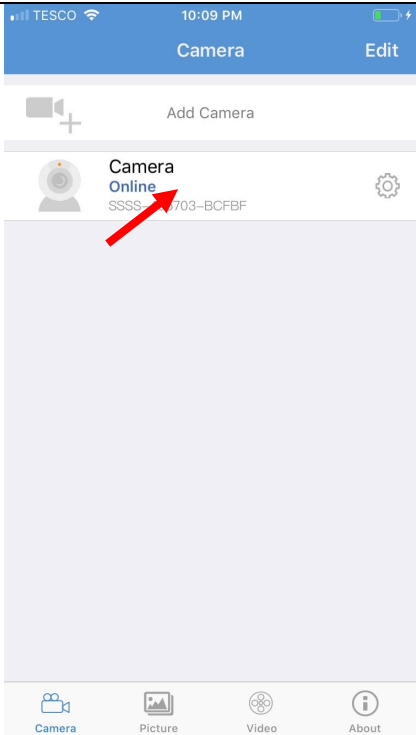


Click Cancel if tip pops up.

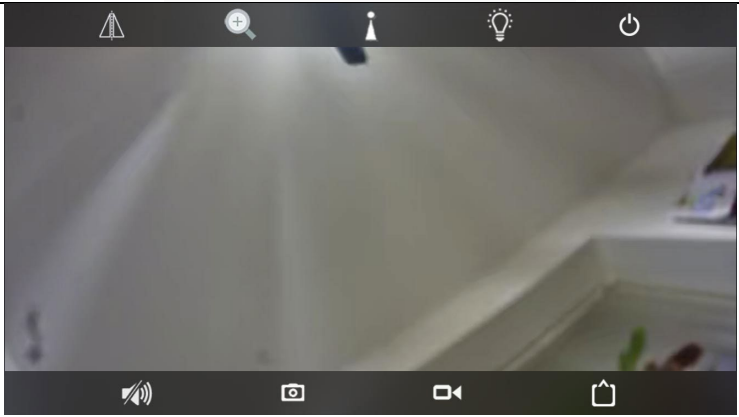


HANDYKAM.COM

Tap camera to view

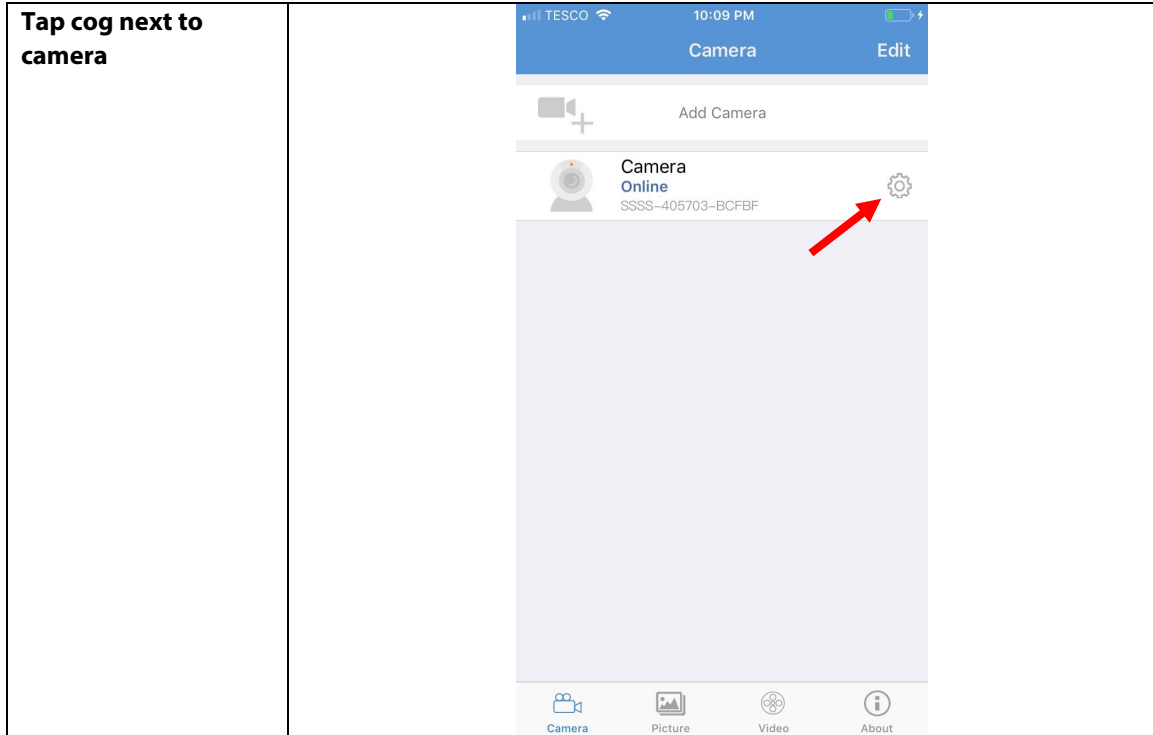


LIVE view



If you want to view the camera on a MAC all you need is the ip address for the camera.

HANDYKAM.COM



Scroll to bottom and click 'Device Information'

The IP address is on the 6th row down.

Write down your IP address.

In your browser, type the IP address in and you should see the camera screen. Log in using admin/admin

Click on PC view

You should see it LIVE.

You can also go into settings tab to change settings or reset the camera.

Hope this helps and you are up and running. Any problems please contact us.

support@handykam.com - **01209 313 579**

© **HANDYKAM.COM V.1**